

By Douglas McColloch

2019 HOT-ROD PRODUCT GUIDE

The Coolest New Parts for Classic Old Iron

Their origins may lie in car culture's distant past, but hot rodding and performance street building remain as fresh as ever in the Age of Mobility. Dozens of cutting-edge, rodding-related products are rolled out each year at the SEMA Show, and sponsored programs such as SEMA's Battle of the Builders and Young Guns have helped to attract a new generation of builders with its own unique take on the craft of hot rodding.

New hot-rod products still attract some of the most attention within the industry, too. Twelve of the 50 most-scanned entries at the New Products Showcase exhibit at the 2018 SEMA Show were related to hot-rod products, indicating continued strong interest in the segment.

Once the province of pre-war two-door roadsters, hot rodding has branched out in the ensuing years to include '60s and '70s musclecars and, more recently, pickups and SUVs. But time doesn't stand still, and

neither does the hot-rod sector. In recent years, the market has begun to see products aimed at owners of '80-and-newer vehicles.

Whichever way consumer preferences may trend, as long as there are enthusiasts looking to restore a classic car, boost horsepower and torque, or simply customize their rides to set them apart from the pack, a thriving hot-rod aftermarket will be there to satisfy their needs. What follows is a survey of related performance, style and comfort entries from the 2018 SEMA Show.



All American Billet Serpentine Conversion Kits for Chevy Small-Block

844-BILLET1

www.allamericanbillet.com

PN: SCK-SBC-103

All American Billet serpentine conversion kits convert V-belt pulleys to the modern six-rib serpentine belts. They mount through the water pump for easy installation and are easily adjusted. The kits are designed for long water pumps and include an alternator bracket, a Saginaw-style power steering pump bracket, pulleys, spacers, belts and hardware. Made in the U.S.A.



A2Z Extreme Custom LLC '47-'55 Chevy 1/2-Ton U-Weld Custom Classic Chassis

517-206-3111

www.a2zextremecustom.com

PN: A14755/MII

The U-Build kits consist of laser-cut parts to build a full chassis for a vintage car or truck. The kits include parts for fully boxed side rails, all major body and bracket mounts, indicators for axle center lines and other locations (running board brackets, etc.) to fit the vintage vehicle.



Air-Zenith Dual-OB2 Deluxe OBA

This super-fast, 100% duty Air-Zenith 200-psi onboard air compressor kit is lab tested for 8.5-cfm air flow. Get a serious jump on the competition with Air-Zenith second-generation OB2, the fastest 12-volt air compressor coupled with a full two-year warranty. The Air-Zenith Dual-OB2 fills a 5-gal. air tank from 160-200 psi in less than 40 sec.



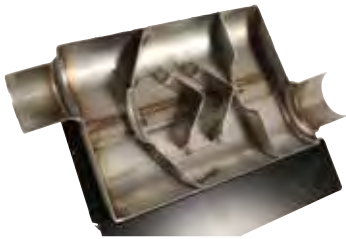
All American Billet LS to Small-Block Chevy Valve Cover Conversion

844-BILLET1

www.allamericanbillet.com

PN: LS-SBC-VCC

Billet LS to small-block Chevy valve cover adapters are designed to hide the ugly coil packs with small-block Chevy valve covers. They work with four different coils (GM 12573190, 12558948, 12611424 and AC Delco D514A) and come with coil mounting hardware, oil plugs and PCV fittings. They use stock valve cover hardware. Gaskets and valve covers are not included. Sold in pairs.



**Speedway Motors
2-in. Stainless-Steel
Chamber Muffler**

800-979-0122
www.speedwaymotors.com
PN: 93035127

These two-chamber mufflers provide an aggressive exterior tone while eliminating the interior drone found in single-baffle designs. The twin-baffle design creates a scavenging effect to pull the exhaust through the muffler, increasing horsepower and torque. They feature a fully welded stainless-steel case with no internal packing to burn up.



**Pedders Suspension
Remote-Canister Adjustable
Coil-Overs for S550 Mustangs**

909-476-6068
www.pedders.com
PN: PED-164099

New for the S550 Mustang, Pedders remote-canister adjustable coil-overs give drivers performance and adjustability like race teams have. The coil-overs feature remote reservoirs, independent rebound and compression adjustment, independent height adjustment, and camber adjustment.



**Pedders Suspension
Sportsryder Suspension Kit for
'15-'19 Ford Mustangs**

909-476-6068
www.pedders.com
PN: PED-814107

Introducing the new Pedders Sportsryder suspension kit for the Ford Mustang S550. The kit comes with matched performance struts, springs, shocks and adjustable sway bars, taking the guesswork out of upgrading a Mustang's suspension.



**Speedway Motors
9-in. Ford Nodular-Iron
Differential Housing**

800-979-0122
www.speedwaymotors.com
PN: 91048398

Speedway's brand-new, cast-iron housing is built to take the abuse of the street, strip or track without the fear of breaking. The case has forged caps and extra reinforcement where it's needed most. These nodular-iron cases accept factory differentials and numerous aftermarket spools. They are superior to the originals in strength and fitment.



**Powermaster Performance
Mustang Upgrade Alternator**

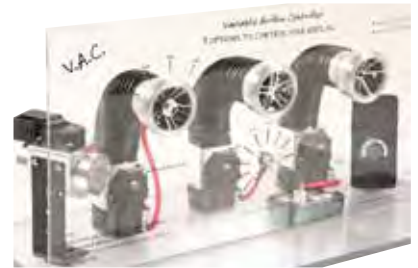
630-957-4019
www.powermasterperformance.com
PN: 51625
This Ford Mustang high-output alternator provides 245 amps—180 amps at idle. Up to 50% more amperage than the stock alternator, yet the direct bolt-on fits the stock brackets. The uniquely designed rotor and stator ensure maximum output and extreme durability. Included is the latest-design clutch pulley to allow for extreme driving conditions.



**Speedway Motors
'28-'48 Ford Milled Forged
Spindles With Kingpins**

800-979-0122
www.speedwaymotors.com
PN: 91032111

These Speedway spindles are a one-piece, drop-forged design constructed of high-strength 4140 steel, which makes them superior to the original components. The spindles have been modified to emulate Lincoln and truck spindles for a seamless installation with flat-top Bendix backing plates. Fitted kingpins are included.



**Restomod Air
Variable Air Flow Controller**

866-784-4278
www.restomodair.com
PN: RM-2-901

Adjust the volume of air flow from each vent independently with the turn of a knob, creating zones for the passenger and driver from a centralized location. The VAC can also be used for adjusting air flow to rear-mounted vents, allowing for full closure when not needed. Adjust air flow 0–100%. Precision CNC machined 6061/T6 aluminum.



For our area of the market, the pulse is still very strong. The customers and their tastes have changed, but the demand is still there. It's our job to identify that and cater to it. We're seeing a lot more electronics-related upgrades, whether it is fuel injection, power steering, performance management, interior amenities, etc. The rate at which technology evolves is making new-product releases in those areas fun to watch.

—Trevor Hobson
National Sales Manager
CVF Racing



All American Billet '67-'72 Ford F-100 Front IFS Suspension Bolt-on Kit

844-BILLET1

www.allamericanbillet.com

PN: #6772F100FS-FACO

Replaces the front I-beam suspension. Uses Ford Crown Victoria ball joints, steering knuckles, hubs and brakes. Hub-to-hub width is about 62.5 in. Uses a Mustang II-style rack and pinion with a manual or power rack. Available for coilovers or airbags and will yield a 6-in. ride height. The airbagged version will lay frame using a 29-in.-tall tire.



American Autowire Factory Fit OEM Wiring Harnesses

800-482-9473

www.americanautowire.com

PN: CE78243

The Factory Fit line of GM OEM reproduction harnesses is built from GM's blueprints on GM's tooling to exact factory specifications. The harnesses are true plug-and-play products. American Autowire covers most GM vehicles from '47-'82, including Chevy, GMC, Pontiac, Buick, Cadillac and Oldsmobile. Authentic OE-reproduction harnesses for restorations.



American Autowire Highway 22 Universal Wiring System

822-482-9473

www.americanautowire.com

PN: 500695

The Highway 22 wiring system is a modular wiring solution that can handle the highest power demands. The fuse box can be mounted just about anywhere in a vehicle (including the trunk) and has plenty of wire length for custom routing. New headlight/dimmer/ignition switches are included. A 175-amp Megafuse is in place for overall system protection.



American Autowire '71-'74 MOPAR B-body Classic Update Kit

800-482-9473

www.americanautowire.com

PN: 510691

The '71-'74 MOPAR B-body classic update kit is a bumper-to-bumper wiring solution specifically for those vehicles. The wiring system was designed for use with most stock or aftermarket components, with plenty of circuits for additional power accessories. It is said to be the most complete wiring system of its kind. Full-color instructions are included.

American Autowire '83-'87 Chevy Truck Classic Update Kit

800-482-9473

www.americanautowire.com

PN: 510706

The '83-'87 Chevy truck classic update kit is a bumper-to-bumper wiring solution specifically for those trucks. The wiring system was designed for use with most stock or aftermarket components, with plenty of circuits for additional power accessories. It is said to be the most complete wiring system of its kind. Full-color instructions are included.



Autotrickz Remote Auto Engine-Starter Kit With Keyless Entry

800-562-0620

www.autotrickz.com

PN: 80272

The kit features three-channel remote capability and option features, including remote engine start, door lock and unlock, trunk/hatch release, panic or car-locator function, starter interrupt or engine kill, park light and horn verification status, passive and active mode, code learning receiver and more.



Axalta Coating Systems

Metalux

855-6-AXALTA

www.metalux.us

Metalux LV is a new, low-VOC color system designed to deliver collision-quality color at an affordable price. It features the versatility and productivity needed for a fast and accurate color match. The product line offers a compact range of primers, clearcoats and accessory products for an unstoppable combination of quality and value.



Axalta Coating Systems

Duxone

855-6-AXALTA

www.duxone.us

Duxone LV is a new, low-VOC basecoat color system that delivers a high-quality finish at a price that will keep shops competitive. The color system is complemented by a portfolio of products, including primers, sealers and clearcoat products. With the Duxone LV range of products, Axalta Coating Systems offers a complete solution for all collision repairs.



Axalta Coating Systems

Nason XL
855-6-AXALTA
www.nasonxl.us

Nason XL is a new product line featuring coatings that are fast and easy to apply for a long-lasting, high-quality finish. The complete line includes a DTM primer, a surfacer, clearcoats and accessories to complement the company's basecoat color system. Achieving an accurate, collision-quality color match to thousands of vehicles has never been easier.



Coker Tire
Premium Sport Lowrider Tire
800-251-6336
www.cokertire.com
PN: 506546

The new and improved Premium Sport tire is the ultimate choice for lowriders. Coker Tire listened to its customers as well as the editors of *Lowrider* magazine when it came time to revamp this popular tire. The narrow, 3/8-in. whitewall has been relocated for authenticity, and the tire now features eight-ply-rated construction for durability.



Complete Custom Auto
'55-'57 Chevrolet Sedan Custom
Power Brake Pedal
+61-412-655-141
www.completecustomauto.com
PN: SKU: CCA-5567-LHD

This '55-'57 Chevy automatic transmission power brake pedal was custom designed with comfortable driving in mind. The pedal sits closer to the floor and is more in line with the accelerator pedal, giving the driver better and safer control of the vehicle, as with modern cars.



Castel Technologies
Enicar Connected
+97-2-506412414
www.enicarconnected.com

Enicar Connected is a full infotainment system with cellular and internet connections to provide a vast variety of features while guiding the user safely with a GPS navigation system. The features include cellular, internet, a navigation system, a Hi-Fi system, an alarm system, an unauthorized car-movement prevention system, GPS car location, 360-degree cameras and tire pressure.



Coker Tire
American Classic Model A+ Bias-Look Radial
800-251-6336
www.cokertire.com
PN: 700326

With the appearance of a bias-ply tire and the performance of a modern radial, the new American Classic Model A+ radial tire is said to be the perfect choice for an authentic restored car that is begging to be driven. Buyers of this revolutionary new tire will enjoy an instant improvement in ride quality without sacrificing the original look.



Classic Instruments
'64-'66 Chevy Truck Instrument Cluster
800-575-0461
www.classicinstruments.com
PN: CT64B

The '64-'66 Chevy truck direct-fit cluster features a speedometer, a tachometer, fuel, oil, temperature and volt gauges and a 12V quartz clock decked out in one of four color schemes: black, tan, white or gray. The all-electric cluster arrives ready to install directly into the stock dash of '64-'66 trucks, reusing the stock bezel.



Complete Custom Auto
'68-'72 Chevelle Smooth Ride Solid Engine Mounts
+61-412-655-141
www.completecustomauto.com
PN: TM109

High-quality, big-horsepower smooth ride big-block or small-block Tuff Mounts solid engine mounts for '68-'72 Chevilles are manufactured with the highest-quality materials on the market and will provide high-horsepower reliability with the smoothest ride possible.



I definitely see the current state of the market as very strong. With the economy seeming to be in a pretty good place right now and the trend being to incorporate modern technology into older hot rods and muscle cars, there seems to be no shortage of new products to be developed. On that note, by far the biggest trend I've seen in the last couple of years is the huge surge in popularity with the classic truck market. It seems that everyone is getting in on the action. Not to be outdone, we are bringing several new innovative truck products to debut at the 2019 SEMA Show.

—David Hays
Owner
Hot Rod Innovations

SEMA ■ HOT ROD ALLEY NEW PRODUCTS



Complete Custom Auto '68 Impala Custom Instrument Cluster Bezel

+61-412-655-141

www.completecustomauto.com

PN: SKU: CCA-IMP-68-DASH

This '68 Impala custom instrument cluster bezel was designed to fit standard 3 3/8-in. aftermarket gauges. Users can buy any color and style that suits their cars. Complete Custom Auto says that this is the perfect product for those looking to replace an Impala's tired, old, cheap plastic bezel and gauges while enhancing the appearance of the dashboard.



Con2r Inc. '58-'62 Chevrolet Corvette SuperStock Clock

503-626-6390

www.con2r.com

PN: 300350-99

Given Con2r believes that the factory got it right with its clock design for '58-'62 Corvettes, the short description is that this clock looks original down to the background embossing. However, this all-new, direct-replacement SuperStock piece from the company's Old Skool Zone features an electronic clock, capacitive-touch time set, and superior LED lighting.



Con2r Inc. '57 Chevrolet Sedan SuperStock Clock

503-626-6390

www.con2r.com

PN: 300450-99

Given Con2r believes that the factory got it right with its clock design for '57 Chevrolets, the short description is that this clock looks original down to the background embossing. However, this all-new, direct-replacement SuperStock piece from the company's Old Skool Zone features an electronic clock, capacitive-touch time set, and superior LED lighting.



MADE IN
THE USA



LIFETIME
GUARANTEE



Con2r Inc.
'61-'64 Ford Truck
SuperStock Gauges
503-626-6390
www.con2r.com
PN: 300080-99

They may look vintage, but the electronic stepper motor drives, a PCB controller and LED halo lighting reveal these instruments to be all new. The balanced three-gauge layout, textures, windows and raised lettering make this Old Skool design look OEM. The domed glass and additional auxiliary gauges are a truly unique option for this model of pickup.



CVF Racing
Billet Hood Hinges
651-356-8593
www.cvfacing.com
PN: 446466M

CVF's new line of billet hood hinges has patent-pending six-axis adjustment built directly into the hinge. This technology allows installers the ability to adjust hood gaps without having to remove the hood. The hinges also feature rock-solid gas struts and sealed bearings connected to stylish, precision-machined billet-aluminum bodies and arms.



CVF Racing
Black Diamond Finish
651-356-8593
www.cvfacing.com
PN: BD-LSX-WRAPTOR-AC

Get all the styling and protection of CVF Racing's stealth black kits along with the modern, bold look of polished-aluminum edges. This all-new, popular finish features 45-degree polished edges to make the kit truly standout from others. All Black Diamond kits feature polished edging along the exterior of the brackets and the interior of the spoked pulleys.

Fits your auto. Fits your life.

MOGO, By Husky Liners®.

Mogo floor liners provides adventure in style for your luxury auto - with stainless steel accents, and precision fit design that hoses clean in a snap. So go ahead and bring a bit of the sand and sea and snow, not to mention dirty paws, diapers, wetsuits and waders into the pristine interior of your high-end automobile — Mogo Floor Mats have you covered.

- + **Built to fully contain the mess.**
- + **Precision fit to your vehicle.**
- + **Stainless steel accents.**
- + **Won't shift around underfoot.**



For additional information contact your rep or call (800) 344-8759.

MÖGÖ
 AUTOMATS



CVF Racing

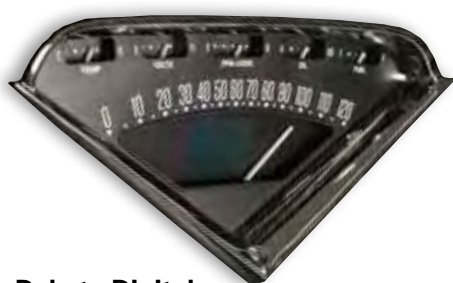
C3 Ceramic Clearcoat Finish

651-356-8593

www.cvfacing.com

PN: C-454-WRAPTOR-AC

CVF's C3 ceramic clearcoat finish is a special formulation that protects the brilliant aluminum with a coating that is harder than powdercoat but is also 100% UV-stable and heat-resistant to more than 1,000°F. The user gets a finish that is maintenance-free and more scratch-resistant without having to worry about yellowing, hazing or oxidation.



Dakota Digital

RTX Chevy Truck Instruments

800-852-3228

www.dakotadigital.com

PN: RTX-55C-PU-X

These instruments fit directly into a stock bezel, with 30 programmable lighting colors for needles, numbers, sweeps and message centers. They include dead-faced indicators for turn signals, high beams, check engine, cruise and parking brake, with programmable warning lights for each gauge. Built-in capacitive-touch programming switches. Bluetooth connectivity for easier setup.



Dakota Digital

HDX Universal Competition

Analog Instruments

800-852-3228

www.dakotadigital.com

PN: HDX-2100-S

The HDX-2100 is a race-oriented instrument system that features a powdercoated billet-aluminum faceplate with intricate machining to create a unique look. Available in black or silver face, with 30 programmable lighting colors to match any theme. Indicators for blinkers, high beams, check engine, cruise control and many others included.



Dakota Digital

RTX '57 Chevy Car Instruments

800-852-3228

www.dakotadigital.com

PN: RTX-73C-PU-X

These instruments fit directly into a stock bezel, with 30 programmable lighting colors for needles, numbers, sweeps and message centers. They include dead-faced indicators for turn signals, high beams, check engine, cruise and parking brake, with programmable warning lights for each gauge. Built-in capacitive-touch programming switches. Bluetooth connectivity for easier setup.



Dakota Digital

RTX '57 Chevy Car Instruments

800-852-3228

www.dakotadigital.com

PN: RTX-57C-X

These instruments fit directly into a stock bezel, with 30 programmable lighting colors for needles, numbers, sweeps and message centers. They include dead-faced indicators for turn signals, high beams, check engine, cruise and parking brake, with programmable warning lights for each gauge. Built-in capacitive-touch programming switches. Bluetooth connectivity for easier setup.



Dakota Digital

RTX Instrument System '66-'77

Ford Bronco and '62-'84

Toyota FJ

800-852-3228

www.dakotadigital.com

PN: RTX-66F-BRO, RTX-62T-FJ

The RTX series is the latest from Dakota Digital. Incorporating the original look of the Bronco and the FJ with the modern features people are used to in their late-model vehicles. Fits directly into a stock dash, with 30 colors to choose from for lighting options. Large TFT message center with a wealth of data behind the scenes.



With the increase in Millennial enthusiasts and the older generations increasingly hopping on the technology train, people are changing the way they're shopping. We've known for a long time that the internet has changed the way people shop, but remember that Millennials grew up shopping online. Many use the internet exclusively to research and order parts. Businesses with a poor internet presence, outdated websites or simply refusing to go online will most assuredly suffer.

—Danny Agosta

**Automotive Project Coordinator
Steel Rubber Products**



Dakota Digital
RTX Chevy Truck Instruments
800-852-3228
www.dakotadigital.com
PN: RTX-67C-PU-X

The RTX series is the latest from Dakota Digital. With a quick glance, one would think that these are original equipment, but when the key turns, all bets are off. This is as close to stock as you can get while enjoying color-changing LED backlighting, TFT message centers and, of course, late-model drivetrain compatibility.



Dakota Digital
RTX '55-'57 Chevy Car
Instruments
800-852-3228
www.dakotadigital.com
PN: RTX-55C-X

The RTX Series has the look of a stock '55-'57 Chevy cluster but offers a full-color TFT message center and LED backlighting (user-adjustable colors). The casual observer will think that this is vintage stuff—until the driver hits the key. Every effort has been put forth to incorporate OEM design elements regarding the layout, face styling and indicators.



Dakota Digital
HDX Universal Competition
Analog Instruments
800-852-3228
www.dakotadigital.com
PN: HDX-2200-K

The HDX 2100/2200 race-oriented instrument systems feature a powdercoated billet-aluminum faceplate with intricate machining to create a unique multi-layered look. They are available in black or silver face, with 30 programmable lighting colors to match any theme. Indicators for blinkers, high beams, check engine, cruise control and many others included.



Dakota Digital
MLX Digital Instruments
for '14-Up Harley-Davidson
Touring Bikes
800-852-3228
www.dakotadigital.com
PN: MLX-8414

Direct plug-in digital instrumentation system for '14-up Harley-Davidson Touring bikes. Features 31 illumination colors. Independently select colors for the main gauge reading, message center information, bar-graph readouts and gauge labels. The message centers offer plenty of information and can be configured to show just what the rider wants.

Relax IN COSTA RICA

WE WANT TO SAVE A SEAT FOR YOU – WIN A FREE TRIP FOR 2!

meyer DISTRIBUTING

PLANET HOLLYWOOD BEACH RESORT, COSTA RICA
JANUARY 23-27, 2020

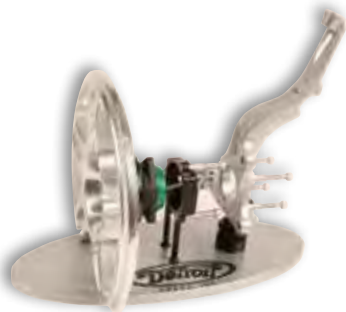
THE MEYER DISTRIBUTING INCENTIVE TRIP WILL INCLUDE:

- Coach class round trip flight for 2
- 5-day/4-night stay
- Luxurious accommodations
- Daily breakfast, lunch and dinner
- In-room mini-bar
- Unlimited open bar
- 24-hour room service
- Free Wi-Fi throughout the resort
- Free in-room calling to North America
- Daily activities for all guests
- Nightly entertainment
- Fully equipped fitness center
- A tranquil haven spa
- All taxes and gratuities

INCREASE YOUR ORDERS IN THESE TOP BRANDS FOR A CHANCE TO WIN!



CALL TODAY! 800.MEYERUSA
 For more information and to register, visit <https://online.meyerdistributing.com/promotions/rewards-trip>



Detroit Speed Inc.
'93-'02 Camaro/Firebird X-Tracker
Hub Adapter Kit
 704-662-3272
www.detroitsspeed.com
 PN: 30601

Detroit Speed's hub adapter kit uses heat-treated alloy-steel adapters to allow use of SKF Racing X-Tracker hubs on factory '93-'02 Camaro/Firebird spindles. That results in improved hub stiffness, performance and durability and reduced brake-caliper piston knock-back without affecting wheel offset or brake system compatibility. They are 100% bolt-on.



Eddie Motorsports
15-in. Billet-Aluminum
Steering Wheels
 888-813-1293
www.eddiemotorsports.com
 PN: MS140-30

These 15-in. custom steering wheels are precision CNC-machined from high-quality billet aluminum. The wheels are available in six different styles and feature a synthetic leather half-wrap grip that comes in six different colors. The spokes are also available in eight different finishes. Eddie Motorsports steering wheels are manufactured in the U.S.A.



Detroit Speed Inc.
'69-'70 Mustang Selecta-Speed
Wiper Kit
 704-662-3272
www.detroitsspeed.com
 PN: 121652

Detroit Speed's new '69-'70 Selecta-Speed wiper kit features a seven-speed wiper system with five delays, low speed and high speed. The new Pitman arm connects directly to the existing wiper linkage. A rotary switch is also included, along with a complete wiring harness and new wiper motor cover that mounts to the factory bracket under the cowl.



Eddie Motorsports
'81-'87 Chevy Truck Billet-
Aluminum Hood Hinges
 888-813-1293
www.eddiemotorsports.com
 PN: MS149-28

Billet-aluminum hood hinges for '81-'87 Chevy and GMC trucks and '81-'91 Chevy Blazers and GMC Jimmys. The hinges are precision CNC-machined from high-quality billet aluminum. They utilize sealed bearings at the pivot point and nitrogen-filled struts for smooth, easy movement. The hinges also work with lowered trucks.



E-Stopp
Key-Lock Switch for E-Stopp Brake
 562-602-2842
www.estopp.com
 PN: ESS009

The Key-Lock switch has all the benefits of the standard E-Stopp brake but with improved anti-theft capabilities. The kit is universal, easy to install, and there's no need to hide the E-Stopp button to protect the vehicle. The Key-Lock switch brings added safety, security and peace of mind to an already incredible product.



Eddie Motorsports
Raven-Series Serpentine Pulley
Accessory Drive Systems
 888-813-1293
www.eddiemotorsports.com
 PN: MS118-55

Eddie Motorsports Raven-series serpentine pulley accessory drive systems come with everything needed to accessorize an engine with American-made billet-aluminum brackets and pulleys and all-new all-black components, including an aluminum water pump, a 170-amp alternator, an A/C compressor and a power steering pump with three reservoir options.



Flaming River
Industries Inc.
Wheel Popper Race
Column
 800-648-8022
www.flamingriver.com
 PN: FR3310LCKT

This new race column in black satin features a laser-cut, collapsible design (diamond laser pattern) and includes a three-bolt quick disconnect. It can also be used with a three-to-five-bolt adapter for popular steering wheels. The universal 35-in. length can be cut to exact length for easy customization. Features a 3/4-DD output shaft. Designed for competition.



The opportunity for growth is still a way out there, but the advent of electric hot rods is upon us, and we will see more and more examples within the next few years. This is particularly spurred on by the likes of Chevrolet with its eCOPO concept (which debuted at last year's SEMA Show) and the subsequent electric powertrain that can be swapped into more conventional body styles. We saw examples at last year's Show with a Tesla powertrain in a '49 Merc!

—Brian Brennan
 Network Director
 Motor Trend Group



Flaming River Industries Inc.
Blank-Slate Floor Plate
 800-826-4488
www.flamingriver.com
 PN: FR20101BLS

This universal floor mount is designed for a street-rod build that will include a new fire-wall. It features a standard rectangular shape with a swivel mount included for easy 2-in. column mounting. This blank slate design works nicely for builders who are installing a column and would like to customize with their own mounting holes, allowing true customization.



Flaming River Industries Inc.
VDOG Variable Angle Gear
 800-648-8022
www.flamingriver.com
 PN: FR20302

This new steering adjuster allows a 90-degree angle from the steering column to the steering mechanism. The articulating output shaft provides for maximum adjustment. It mounts horizontally or vertically and features an aluminum housing with a -36 output shaft to connect to the universal joints. It is a gear-driven unit without any chains or sprockets. Designed and built in the U.S.A.



Flaming River Industries Inc.
Collapsible Gearshift
Micro Column
 800-648-8022
www.flamingriver.com
 PN: FR20020MC-LC

Flaming River offers a new collapsible gearshift micro column. At 17 in. in length, it allows optimal clearance. The collapsible diamond laser adds a key safety feature. Flaming River responded to a request by an Australian builder. As with all Flaming River tilt columns, it has all-new components and stainless steel, and it is made in the U.S.A.



Flaming River Industries Inc.
RHD Column Shift for Export
 800-648-8022
www.flamingriver.com
 PN: FR21230

Flaming River has designed a gearshift with the shifter on the left side for a customized solution to the export market. Custom sizes are also available. As with all Flaming River tilt columns, this one has all-new components and stainless steel, and it is made in the U.S.A.

Hidden Audio Solutions!



Secretaudio® SST-V

Hideaway 200 Watt AM/FM CD controller with Bluetooth®, USB MP3/WMA Flash Drive, iPod interface & more.

- Featuring hand held "RF" (radio frequency) remote control, 30' range.
- Bluetooth® music streaming and voice calling from your mobile phone.
- The tuner/amplifier unit (black box) can be hidden out of site (under seat, dash).
- iPod, iPhone control through USB. • CD-1 Controller. (CD player sold separately)



Licensed by Ford and GM



NO RETAIL SALES. To become a dealer visit:
customautosoundmfg.com
 or call
800-888-8637



**GreX Airbrush
Micro Spray Gun Set**
323-318-2828
www.grextools.com
PN: MFTG

GreX says that its new Micro Spray Gun set is the ultimate paint gun for fine, detailed spraying. Reach into the tightest nooks and crannies for the perfect paint job. Spot repairs and touchups are quick and easy with minimal overspray. The gun even evolves with user's needs with plenty of accessories and attachments to accommodate all applications.



**Hot Rod Innovations
EZ-Entry Steering Column Slider**
916-206-6809
www.hotrodinnovations.cool
PN: UNIV-STEERINGKIT

Introducing brand-new, easy-entry, slide-away steering. With this kit, squeezing past the steering wheel to get in or out of a hot rod is now a thing of the past. Simply open the door and the column slides out of the way. Close the door and it moves back into place. This universal weld-in kit comes with everything needed for easy installation.



**Hot Rod Innovations
Billet Coil-Over Throttle Return
Spring Kit**

916-206-6809
www.hotrodinnovations.cool
PN: HRI-1HOL-000

The adjustable billet coil-over-shock throttle return spring kit will fit most carburetors and fuel-injection conversion kits. Not only does it look clean, but it also allows the user to adjust the feel of the throttle pedal without having to change the actual spring. Simply spin the adjuster ring on the threaded shock body to change the tension.



**Hotwire Auto
'03-'05 Cummins 5.9L Diesel
Standalone Harness**
479-243-9115
www.hotwireauto.com
PN: R-0043

This is a completely self-contained engine and transmission harness to retrofit the 5.9L Cummins 24V engine. It comes with its own fuse block, relays, data port and the open wires needed to make the engine and transmission run in a hot rod, an off-road vehicle or any aftermarket application. All sensors are OEM-style connectors and are labeled for ease of installation.

**HushMat
& Zycor**

ZyCor
913-599-2600
www.zycoat.com
PN: 50000

ZyCor high-temperature, corrosion-resistant primer provides 5,000-hour salt spray corrosion resistance to automotive, truck and marine components. ZyCor is formulated to withstand the aggressive automotive, engine environment as a standalone coating, or it can be used as a corrosion-resistant basecoat for ZyBar's patented color coats.



**Intellitronix
LED Direct-Replacement Turn
Signal/Off-Road High Beam for
'11-'16 Ford F-Series Super Duty**
+44-0-3597200 x206
www.intellitronix.com
PN: FSL001

Ford Super Duty '11-'16 Sniper Light is a dual-purpose, direct-replacement LED turn signal/off-road high-beam light built into one unit. The off-road high beam is hidden within the amber turn signal—hence the name Sniper Light. These exceptional lights have an additional 4,000 lumens each. Patent pending, lifetime warranty, American made.



**Intellitronix
LED Gear Indicator**
+440-359-7200 x207
www.intellitronix.com
PN: GI001

The Intellitronix gear-indicator gauge (2 1/16 in.) features PRND plus OD and 1–6 gears, with turn signals, high beam and check-engine indicator. It is compatible with all popular automatic transmissions. Includes all hardware and accessories. Size allows for easy fitment in most gauge panels or gauge pods. American made with a lifetime warranty.



If companies can build product to take out as much guesswork and DIY fabrication as possible, that would absolutely yield itself to growth. People want quick and easy. I'm sure that's always been challenging for any aftermarket builder of parts/components. Maintaining quality while at a relatively affordable price point is the objective. If you can prove the product is worth the price, customers will be happy to buy and use it.

—Scott Nelson
Operations Manager/Sales
GSI Machine & Fabrication



Intellitronix
'67-'72 Chevy Truck 3D Direct-
Replacement Analog
Gauge Cluster
 +440-359-7200 x206
www.intellitronix.com
 PN: AP6003

Intellitronix 3D LED analog direct-replacement gauge panel with brushed stainless-steel faceplate for '67-'72 Chevy trucks. It's a classic piece of Bowtie history with an elegant yet mean new bite. Welcome to the next stage of innovation mixed with ingenuity. Senders and mounting hardware included. American-made with a lifetime warranty.



Intellitronix
Universal Seven-Gauge Analog
Cluster With Color-Changing
Needles
 +440-359-7200 x206
www.intellitronix.com
 PN: AP30002

LED universal seven-gauge analog panel with color-changing needles and aluminum chrome billet. Gauges include speedometer, tachometer, oil pressure, water temperature, fuel, volts and digital clock. Speed, oil-pressure and temperature sending units are included. American-made product with a lifetime warranty. Patent pending.



Intellitronix
'67-'72 Chevy Truck Direct-Replacement Analog Gauge Cluster
 +440-359-7200 x206
www.intellitronix.com
 PN: AP26003

Intellitronix analog direct-replacement gauge panel for '67-'72 Chevy trucks. A classic piece of Bowtie history with an elegant-yet-mean new bite. Seven gauges all wrapped up in a black polycarbonate sub surface with a brushstroke finish. Senders and mounting hardware included. American made with a lifetime warranty.

ASK NOT WHAT SEMA
CAN DO FOR YOU...



ASK WHAT YOU CAN DO
FOR YOUR FUTURE!

SEMA PAC SUPPORTS THE CAR GUYS IN CONGRESS WHO SUPPORT YOU. BECOME SEMA PAC APPROVED FOR FREE!

www.SEMApac.com



SEMA PAC
WINNER'S CIRCLE

ORIGINAL LOOK
WITH A RADIAL RIDE

American Classic
 collector radials

NEW Bias Look Radials
 for Ford Model A and
 other Vehicles from
 1928 to 1931

American Classic
 collector radials

Designed for Classic
 Car And Trucks Built
 from the 1940'S
 through the 1960'S

Firestone WIDE
 RADIAL OVAL

The Ultimate Muscle
 Car Tire, Blending
 Authentic Appearance
 and Modern Ride



COKER
TIRE
Wheels Too!

DEALERS WELCOME!
WHOLESALE @ COKER.COM
866-922-0357
COKERTIRE.COM



JJ'S Rods & E-Z Firewall Boots
Steering-Wheel Rubber Boot Seal
 704-681-1357
www.jjsrods.com
 PN: JJS-32561917-1

Steering-column rubber boot seal that stops hot air, fumes, dust and thermo heat from coming up the steering column, and the rubber boot absorbs the heat. It finishes off the area around the steering column and looks good. Can be used inside or outside the vehicle. Plus, it will go over and cover the lower steering column bracket.



Keg Digital Garage
Digital Rendering
 479-452-2626
www.kegmedia.com
 PN: REND-HR

Keg Media has been the industry leader in concept renderings since 2002. Perfecting the art of a realistic approach, Keg Media works with the client to bring their ideas to life in a digital setting. Once the rendering is complete, the end consumer can request digital files or a printed poster. Gone are the days of guessing how a vehicle will look when finished.



Leed Brakes
Ford Bronco Front Disc-Brake Conversion
 716-852-2139
www.leedbrakes.com
 PN: FC5001SM

This '66-'75 Ford Bronco front disc brake conversion kit is designed for huge stopping power in a 15-in.-or-larger wheel. To provide that stopping power, Leed Brakes includes heavy-duty two-piston calipers with 51mm pistons and massive 12-in. vented rotors. Installation is all bolt-on, with no cutting, drilling or welding required.



Leed Brakes
Bandit-Series Electric Vacuum Pump
 716-852-2139
www.leedbrakes.com
 PN: VP001B

Compact rotary-vane-style pump capable of producing up to 25 in. of vacuum. This style of pump is said to be 60% quieter and 30% more efficient than the traditional piston-style electric vacuum pumps. All Bandit-series vacuum pumps are pre-wired with the vacuum switch and relay, making for an easy two-wire installation.



Level Ride Air Suspension
Pressure-Only Air Suspension Management
 702-666-2066
www.levelrideairsuspension.com

Level Ride air suspension pressure-only management for front and rear and rear-only air-bag suspension features a 5.5-in. touchscreen Bluetooth controller with Wi-Fi registration and logging backup for online diagnostics, voice control for preset height, and full manual control inside and outside the vehicle. Built-in battery monitor and jump-start protection.



Level Ride Air Suspension
Hydraulic Height and Pressure Management
 702-666-2066
www.levelrideairsuspension.com

Ride control for hydraulic suspension. Runs on the car's 12V battery. The compact motor and manifold take up less room than most air suspension systems. Piston accumulators with patent-pending 24-point adjustable shocks in compression and rebound with high-pressure bypass, allowing sports-style driving.



Level Ride Air Suspension
Height and Pressure Ride Control
 702-666-2066
www.levelrideairsuspension.com
 PN: LVL-HP

Level Ride pneumatic ride control features height and pressure for the perfect ride height every time. Features terrain sensing that height-only systems cannot detect, which is why they are unstable. Also features brake sensing to prevent unwanted adjustments when stopped or braking, plus jump-start protection and battery monitor. Accurate within 1% of saved heights.



Lokar Inc.
Clayton Machine Works '62-'67
Chevy II Nova Direct-Fit Throttle Pedal Assembly
 865-824-9778
www.claytonmachine.com

Take a vehicle to the next level with a Clayton Machine Works '62-'67 Chevy II Nova throttle pedal assembly. Engineered with modern Pro Touring styling and designed to mount in the original pedal mounting location, these pedals allow for the use of a modern Lokar throttle cable system.



Lokar Inc.
Clayton Machine Works '55-'57
Chevy Direct-Fit Throttle Pedal Assembly
 865-824-9778
www.claytonmachine.com

Take a vehicle to the next level with a Clayton Machine Works '55-'57 Chevy throttle pedal assembly. Engineered with modern Pro Touring styling and designed to mount in the original pedal-mounting location, these pedals allow for the use of a modern Lokar throttle cable system.



**Lokar Inc.
Clayton Machine Works Billet-
Aluminum LS Engine Oil Cap**

865-824-9778

www.claytonmachine.com

Take a vehicle to the next level with a Clayton Machine Works billet-aluminum LS engine oil cap. Machined from 6061-T6 aluminum and available in black and natural finishes, the billet-aluminum LS engine oil cap complements other Clayton Machine Works products.

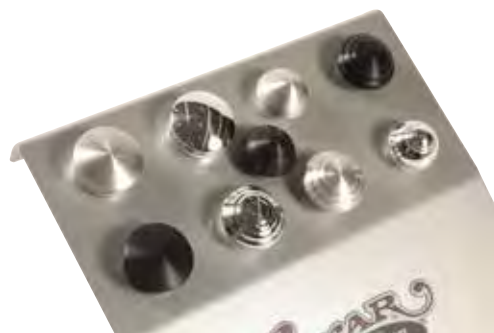


**Lokar Inc.
Goolsby-Edition Lucille Billet-
Aluminum Accessories**

877-469-7440

www.lokar.com

With its elegant styling, billet-aluminum construction and chrome finish, Goolsby-edition Lucille accessories allow users to replicate the classic style of Lokar's '40 Ford Lucille in their vehicles.



**Lokar Inc.
Billet-Aluminum Air Cleaner Nut**

877-469-7440

www.lokar.com

Lokar's Billet-Aluminum Air Cleaner Nuts feature a protective O-ring to prevent marring of the air cleaner surface. They are available in several different styles along with black, brushed and polished finishes.



**Lokar Inc.
Clayton Machine Works Billet Drive-
By-Wire Throttle Pedal Assembly**

865-824-9778

www.claytonmachine.com

Take a vehicle to the next level with a Clayton Machine Works billet drive-by-wire throttle pedal assembly. Engineered for most popular drive-by-wire applications and machined from billet aluminum, the billet-aluminum drive-by-wire throttle pedal assembly is designed to complement other Clayton Machine Works products.



**Lokar Inc.
'70-'81 GM F-Body Direct-Fit
Throttle Pedal Assembly**

877-469-7440

www.lokar.com

PN: BAG-6206

Lokar's '70-'81 GM F-body throttle Pedal Assembly is designed to mount in the original pedal-mounting location and allows for the use of a modern Lokar throttle cable system.



**Lokar Inc.
Throttle Cable System for the
Holley Dual Throttle Body Intake**

877-469-7440

www.lokar.com

Lokar's throttle cable system for the Holley Dual Throttle Body Intake provides a safe, secure and completely adjustable throttle cable solution for dual throttle-body applications.



**Lokar Inc.
Billet-Aluminum Dash Knobs**

877-469-7440

www.lokar.com

Designed to complement the complete line of Lokar interior products, Lokar's billet-aluminum dash knobs are available in several styles and finishes with trim bezels to accommodate most applications.



What's hot: trucks. Specifically, models from the mid-'70s to the late '80s are absolutely on fire. Plus, the owners of those trucks are younger, passionate about their trucks and thoroughly enjoy sharing the hobby with pals and peers. The social-media outreach of C-10, F-100 and other truck owners, clubs and events is huge and totally enthusiast-driven.

—Todd Ryden

**Performance Automotive Media and Marketing Support
InGear Media**



Lokar Inc.
Lokar '68-'72 GM A-Body Direct-Fit Throttle Pedal Assembly

877-469-7440
www.lokar.com
 PN: BAG-6205

Lokar's '68-'72 GM A-body Throttle Pedal Assembly is designed to mount in the original pedal-mounting location and allows for the use of a modern Lokar throttle cable system.



Lokar Inc.
Anchor-Tight Locking Flexible Transmission Dipstick for 4L80 and 6L80 Transmissions

877-469-7440
www.lokar.com

Lokar's anchor-tight locking flexible transmission dipstick for the 4L80 and 6L80 transmissions prevents expulsion of the dipstick under extreme transmission pressures and is accepted by the NHRA for use in all categories of competition.



Lokar Inc.
Stainless-Steel Kickdown Bracket

877-469-7440
www.lokar.com

Lokar's stainless-steel kickdown cable bracket provides for secure mounting of a Lokar kickdown cable to most four-barrel carburetors when using a rigid throttle linkage.



MB Marketing & Manufacturing
PV24APV
 800-231-4125
www.mbmbrakes.com
 PN: PV24APV

This bracket adapter allows users to connect an adjustable proportioning valve to the combination valve.



MB Marketing & Manufacturing
260-8555-CHR-MBM
 800-231-4125
www.mbmbrakes.com
 PN: 260-8555-CHR-MBM

The latest GM/street-rod-styled chrome oval flat-top master cylinder is available in both 1-in. and 1.125-in. bores. It has 1/2-20 and 3/16-18 ports. It can be used for manual or power brakes with the removable piston adaptor that is included. It has slotted mounting ears to fit GM or Ford stud patterns. Dress up an engine bay. Easy to install. In stock.



NotchHead
Lid Prop
 360-243-3492
www.notchhead.com
 PN: 5800

Whether it's a hood, trunk or compartment, NotchHead lid props are a winning proposition. Just lift the lid and NotchHead's Lid Prop securely rock-and-locks into position. Lift again to rock-and-unlock the Lid Prop and down it comes. Available in two styles: lighting holes or slotted. They come in three finishes: machined, polished or black hard anodized.



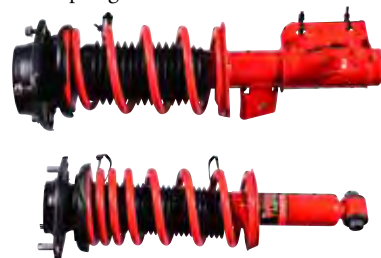
NotchHead
USB Dash Charging Ports and Bezel
 360-243-3492
www.notchhead.com
 PN: 4800

The NotchHead USB combines new-tech power with a bit of old-school cool. You can convert an old cigarette lighter (or other custom location) to a convenient and powerful charging station handling input voltage of 8-28 volts, and it looks right at home in a hot rod or a musclecar. Available in three finishes: machined, polished or black hard-anodized.



Pedders Suspension
eXtreme XA Coil-Over Hot-Rod Shocks
 909-476-6068
www.pedders.com
 PN: PED-160092-3KG

Pedders says that its eXtreme XA coil-over kits are the ideal kit for a custom car build. The award-winning eXtreme XA adjustable coil-over offers exceptional ride and handling characteristics with 30 levels of damping adjustment, and its available with a variety of different springs.



Pedders Suspension
Sportsryder EziFit Kit for '13-'18
BRZ/FR-S/86
 909-476-6068
www.pedders.com
 PN: PED-803050

Pedders says that its SportRyder EziFit Kit for the ZC6/ZN6 platform is the perfect solution for drivers looking to lower their cars reliably and not break the bank. The kit comes with four fully assembled, performance-matched strut, spring and mount assemblies that make installation a breeze.



**Pedders Suspension
Sportsryder EziFit Kit for '02-'07
Subaru Impreza WRX**
909-476-6068
www.pedders.com
PN: PED-803035

Pedders says that its SportRyder EziFit Kit is the perfect solution for drivers looking to lower their cars reliably and not break the bank. The kit comes with four fully assembled, performance-matched strut, spring and mount assemblies that make installation a breeze.



**Pedders Suspension
Sportsryder Brake Upgrade Kit
for '15+ Mustang GT With
Performance Pack**
909-476-6068
www.pedders.com
PN: PED-BK005H

Pedders introduces its new SportsRyder brake upgrade kit for the '15-'18 Mustang GT with performance package. The kit comes with slotted and dimpled rotors, steel-braided brake lines, and Sports Ryder Kevlar/carbon fiber, which provides excellent stopping power with low dust.



**Powermaster Performance
Corvette/Camaro Upgrade**
630-957-4019
www.powermasterperformance.com
PN: 38969

This Corvette alternator with 220 amps—150 amps at idle. Direct bolt-on fits existing brackets and replaces all lower-amp original Valeo alternators. One- or three-wire connection. Includes the decoupler pulley to eliminate belt slip and improve belt-drive system durability. Made in the U.S.A.



Featured Lines: **MICROFLEX**
GEARWRENCH
IR Ingersoll Rand
Milwaukee
Chicago Pneumatic
Sp
SUNEX TOOLS
DEWALT

- Our second annual **Virtual Tool Showcase** event features **SUPER SPECIALS** at every turn!
- Midstate Tool is a complete professional quality tool, equipment and auto-body supply master warehouse. We stock over 250 USA-based **brand-name** manufacturers' complete lines with parts and accessories.
- Visit our web site: **www.midstatetool.com**

www.virtualTOOLshowcase.com

Register Here to Begin Your Virtual Showcase Adventure!

**Be our guest online
May 16-31, 2019
A Tool Show at Your
Fingertips 24/7**





Ron Francis Wiring 6R80 Gearshift Indicator

800-292-1940
www.ronfrancis.com
PN: CY-80

New from Ron Francis Wiring is the CY-80, a 6R80 transmission gearshift indicator that includes neutral safety and backup-light functions. The unit communicates via the data stream of the factory ECM for factory-type function and doesn't require any additional sensors or brackets attaching to the transmission.



Speedway Motors Ball Joint and Spindle Taper Gauge

800-979-0122
www.speedwaymotors.com
PN: 91636038

This quick guide allows users to determine the amount of taper on ball joints, spindles, tie-rod ends and center links. Measures both inside and outside tapers in 7- and 10-degree and popular diameters.



Speedway Motors '55-'57 Chevy LS Engine Mount Kit

800-979-0122
www.speedwaymotors.com
PN: 91655571

Speedway offers the engine swap mounts to place a modern LS engine in a '55-'57 Chevy chassis. Designed from scratch, this engine-mount kit locates off of the factory frame rivets to ensure proper alignment. It's never been easier to upgrade the driveline of a Bel-Air or a 210 with a modern powerplant.



Speedway Motors Heavy-Duty Gasser Straight Axle

800-979-0122
www.speedwaymotors.com
PN: 91035128

Speedway brings to market a heavier-duty application of its popular gasser axle selection. Available in 44-, 46-, 48- and 50-in. widths for Chevy or Ford spindles. It is 28% stronger, 19% stiffer and 28% heavier. Features .375-in.-wall-thickness 1026 DOM steel (standard axle is .25-in. wall). Recommended for vehicles more than 3,600 lbs. or drag-race applications.



Speedway Motors '64-'72 GM A-Body Splined Sway-Bar Kit

800-979-0122
www.speedwaymotors.com
PN: 91664721

These '64-'72 GM A-body Splined Sway-Bar and Aluminum Arms look the part of a modern race car and increase the bar's effective rate to improve handling. Fine-tuned alignment and clearance to any ride height is achievable through the adjustable end links and the placement of the arm on the splined shaft.



Speedway Motors '64-'67 GM A-Body Tubular Rear Control Arms and Sway Bar

800-979-0122
www.speedwaymotors.com
PN: 9161964

These kits include everything needed to bring a GM A-body up-to-date with the latest in handling technology. They feature improved powdercoated heavy-duty tubular rear trailing arms and an HD 30mm sway bar for '64-'67 GM A-body cars. The adjustable upper arms allow for pinion-angle adjustment and include a Giirro bushing design to eliminate wheel hop.



Speedway Motors '67-'69 Camaro Rear Torque Arm Suspension

800-979-0122
www.speedwaymotors.com
PN: 91616769

This system replaces the factory leaf-spring suspension in the F-body with a 2-in.-lower coil-over track bar suspension. The suspension bolts to the factory locations and avoids cutting into the F-body floorpans. Track tested and engineered for greatness.



Over the past couple of years, there has been a significant growth of passion and excitement among enthusiasts—specifically the Pro Touring musclecar enthusiasts who compete in autocross competitions around the country. We began competing ourselves last year, and believe me, I can tell you from experience that the autocross bug bites hard. This excitement and passion is creating opportunities for the automotive aftermarket that we haven't seen in decades to deliver performance parts that enthusiasts crave.

—David Coker
President
Rocket Racing Wheels



SSBC Performance Brake Systems
B8 Barbarian
716-480-3717
www.ssbrakes.com
PN: A404-20/21

The B8 Barbarian is an eight-piston caliper that is designed and engineered for '13-'18 Ford F-250s/F-350s, '12-'18 GM 2500s/3500s, and '09-'18 RAM 2500s/3500s. Whether it's an everyday driver or a custom build, the vehicle will have full stopping power—both in style and performance. The B8 Barbarian comes fully assembled in one box, with no adapter brackets required.



SSBC Performance Brake Systems
Dual-Bowl, Original-Look Jelly Jar
Master Cylinder
716-480-3717
www.ssbrakes.com
PN: MC1001

Increase a Mustang's stopping power, performance and safety with SSBC's U.S.A.-made billet-aluminum master cylinder. This original-style Jelly Jar-designed master cylinder features an SSBC-engineered dual-bowl system. Available for both manual and automatic transmission vehicles with no modification required to the shock tower or Z-bar setup.



Steele Rubber Products
A/C Gasket Kit
800-447-0849
www.steelerubber.com
PN: 70-3905-97

This new one-piece EPDM-replacement A/C gasket kit fits most RV and marine roof-top units. Ensures no-leak functionality and yields higher UV-, ozone- and weather-resistant durability. Includes two 7-in. leveling blocks and an instruction sheet with installation tips.



Steele Rubber Products
Push-Out Window Gasket Set
800-447-0849
www.steelerubber.com
PN: 90-0152-81

For '61-'67 Ford vans with push-out windows, this three-piece kit includes the main push-out window weatherstrip that is fixed on the body, the window frame inner gasket that goes between the glass and the frame, and the window frame outer gasket that goes around the outside perimeter of the frame and seals when the window is closed.



United Pacific Industries
'32 Ford Passenger Car Original-Style Stainless-Steel Grille
Insert Without Crank Hole

562-912-2858
www.upcarparts.com
PN: B20341

Die-stamped 304 polished stainless steel. The desirable version with the separate outer surround trim. Hot-rod style without the crank-handle hole.



United Pacific Industries
'60-'66 Chevy and GMC Truck Fleetside
Sequential LED Taillight Lens

562-912-2858
www.upcarparts.com
PN: 110199

With more than 30 years of experience, United Pacific is dedicated to the design, manufacture and supply of automotive products for heavy-duty trucks and classic cars. Proud to be an industry leader, United Pacific carries more than 20,000 innovative and superior products using state-of-the-art technologies.



Some of the hobbyists in our industry are getting older, and I'm starting to see more cars for sale. With more cars for sale, I think we're seeing prices coming down. It's going to make getting into the hobby less expensive, and I hope that fuels growth going forward. The price of admission to this hobby used to be kind of high, so I hope that as more of our generation turns loose some of our cars, there's going to be enough of them out there so that prices won't be so sky-high.

—Rick Love
Executive Vice President
Vintage Air



Tuff Stuff Performance

Accessories Ltd.

High-Output Alternators for Jeeps

216-961-1800

www.tuffstuffperformance.com

PN: 7516G

These alternators provide up to 50% more amperage than the stock Jeep alternator, yet they retain the OE form factor. The huge copper windings, giant diodes and premium-quality ball bearings assure maximum output—up to 210 amps at idle—and extreme dependability. Available in 175- and 250-amp versions with army green or black wrinkle finish.



Unisteer Performance

Chevy II/Nova Electra-Steer

Column Kit

800-338-9080

www.unisteer.com

Try out Unisteer's Chevy II/Nova Electra-Steer and get power steering without the hydraulics. Unisteer combines the great 360W Electra-Steer motor with ididit's retrofit column for a drop-in power steering solution for the Chevy. Everything is included. The motor, column and power steering motor will tuck up underneath the dash.



United Pacific Industries

'32 Ford Passenger Car Original-Style Stainless-Steel Grille Insert With Crank Hole

562-912-2858

www.upcarparts.com

PN: B20340

Die-stamped 304 polished stainless steel. The desirable version with the separate outer surround trim. Features the original crank-handle hole.



United Pacific Industries

'66-'77 Ford Bronco Billet-Aluminum Taillight Bezels (Satin Black Anodized)

562-912-2858

www.upcarparts.com

PN: 110584

CNC-milled out of a single solid-aluminum block. Durable satin black anodized for a tough off-road look. Stainless-steel, extended-length, socket-head screws are included for use with the original taillight lens mounting holes. Includes foam gaskets to prevent scratches to the taillight panel. Sold as a set.



Vintage Air Inc.

'67-'69 Camaro Gen IV

Control Panels

210-654-7171

www.vintageair.com

PN: n/a

Vintage Air announces the latest addition to the Gen IV SureFit line for '67-'69 Camaros. These new, fully electronic control panels are direct bolt-ins to the factory Camaro dash and deliver variable fan speed, air delivery blend and temperature control of the Gen IV climate control system. The panels also feature adjustable LED backlighting.

United Pacific Industries

'67-'77 Ford Bronco and '67-'72 Ford Truck 27-LED Sequential Taillight Retrofit

562-912-2858

www.upcarparts.com

PN: 110497

Super-bright LED circuit board installs behind the existing lens. Dual function with taillight and bright stop/turn signal. Features sequential operation with selector switch to select sequential function on/off. Features sequential once brake attention function. Requires United Pacific LED turn signal flasher, item #90652.



Vintage Air Inc.

'67-'72 Ford F-100 Gen IV

SureFit Kit

800-862-6658

www.vintageair.com

PN: 951156-9

The '67-'72 Ford F-100 Gen IV SureFit kit offers infinite temperature air blend, blower fan speed adjustment and high-volume defrost. Also included are new rotary controls for the '67 or cable converters, new levers and a placard for the '68-'72 factory control panels. The included underdash panel with factory-style louvers adds to the OEM appearance. ■